



# PiVoid XL

Your attractive choice

[www.plastinjectwatersystem.se](http://www.plastinjectwatersystem.se)

# PiVoid XL

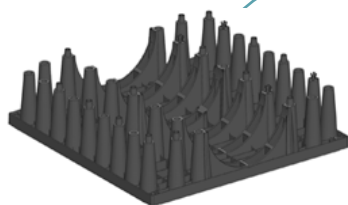
PiVoid XL brings many advantages

- Robust design secures heavy traffic load (SLW60).
- Smart concept minimizing number of components.
- Storage volume 96%.
- Square shaped bottom allows rotating creating additional flexibility.
- Compatible dimensions to all our other ranges of Stormwater boxes.
- Effective stackability brings optimal logistics and big transport volume, 260-380 m<sup>3</sup>, depending size of trailer/lorry.
- Special pillar design for integration of sidewalls.
- Centre placed flush/sedimentation channel with connection dia up to 400 mm.
- Made in Sweden, by recycled material and driven by green electricity gives an optimal sustainability opportunity.





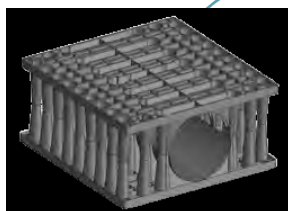
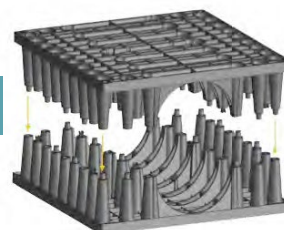
# Pivoid XL – the concept



Base module

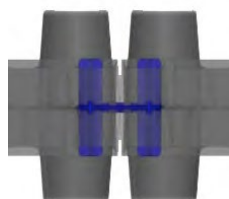
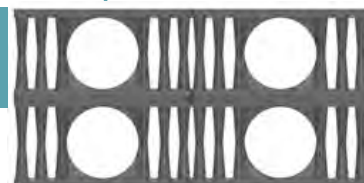
Dimensions=1000mm\*1000 mm\*250 mm

Lift- turn 180 degrees- click together!

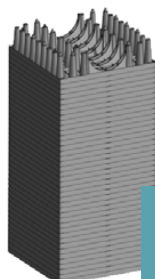


Sedimentation/flush channel 400 mm can be connected.

Layers can be installed side by side or on top of each other.



Locking plugs – single or double – lock modules sideways or vertically.



Base modules stacked on pallet.  
44 pcs brings 11 m3 installation volume/pallet.

Cover/Lid with integrated connection diameters to be clicked on the module.



# PiVoid XL

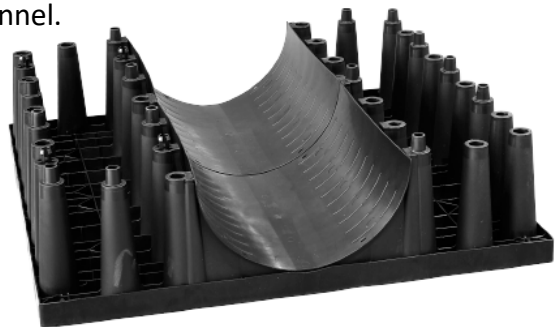
## Flush and sedimentation channel 400 mm

Brings optimal access and effective flushing.

Sedimentation is collected and stays in the channel until flushing easily removes it back to nearest sandtrap/chamber.

The channel is also making drive of camera at inspection much smoother.

The channel is assembled in the bottom of the base module but can also be mounted in the module on top creating a closed designed channel.

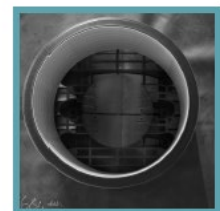


## Inspection chamber options

Inspection can easily be adapted on top of the module.

2 off dimensions available, dia 400 mm or 600 mm respectively.

Connection collars available for all common pipe diameters.







# PiVoid XL accessories

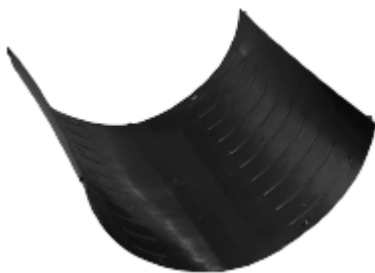
Makes your installation complete



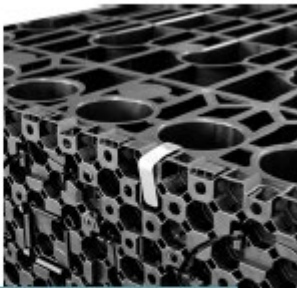
Cover/Lid with integrated connection diameters to be clicked on the module.



Corners in robust execution. Holds geotextile or membrane in place. To be clicked on the module.



Sedimentation/flush channel 400 mm. Brings maintenance easy. To be clicked on the module.



Clips for Sidewalls (only to be used for higher installations exceeding 1.5 m).



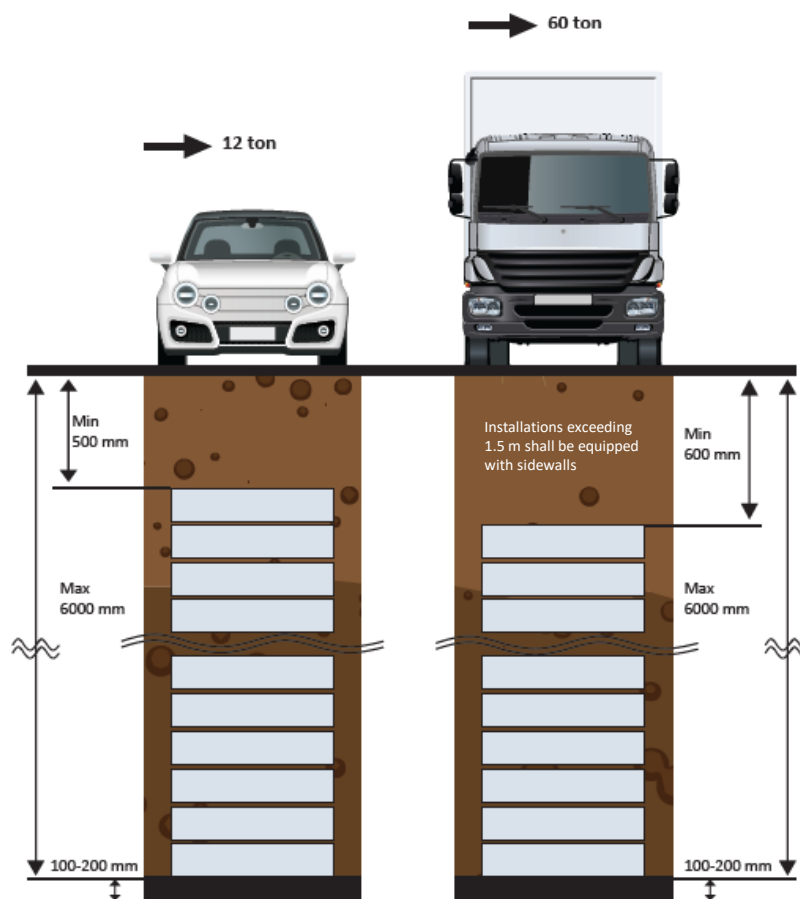
Locking plugs – single or double – lock modules sideways or vertically.



# PiVoid XL

## Load/ installation options

The hollow pillar construction - installed in special cross section pattern – allows max flexibility and load.



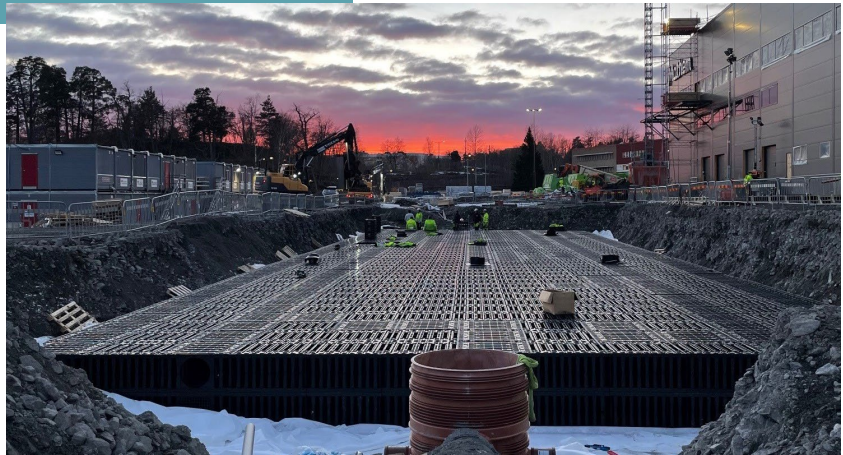
At Installation in green area we recommend min cover of 450 mm.



# PiVoid XL

Installations for both Soakaway or Attenuation

Soakaway = geotextile to be wrapped around the modules.



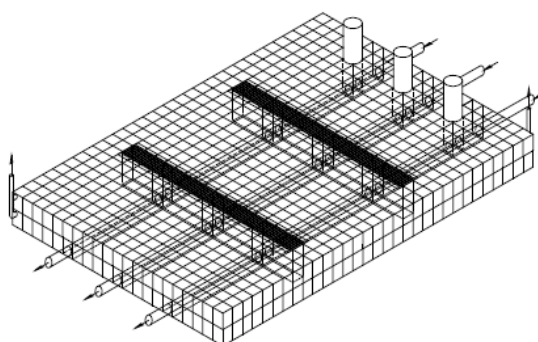
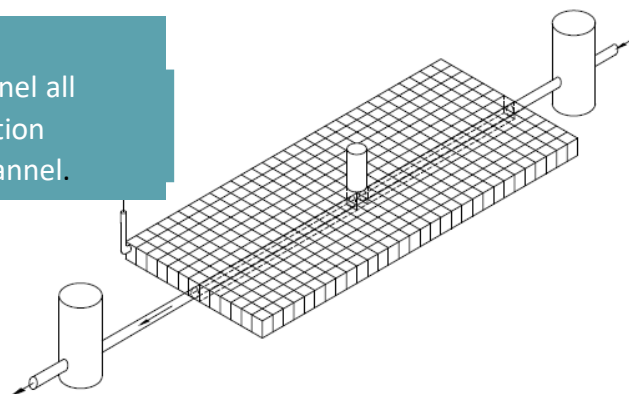
Attenuation = Membrane to be adapted in combination with geotextiles for protection it acc.



# PiVoid XL

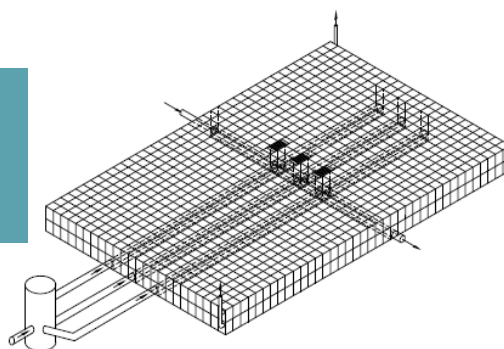
## Proposals of smart and effective installations

Height= 0.5 m. (1 layer).  
Flush/sedimentation channel all  
along dia 400 mm. Inspection  
chamber on top of the channel.



1 m. (2 layer). 3 off  
Flush/sedimentation channels all  
along dia 400 mm. 3 off Inspection  
chambers on top of the channels.  
AIC inspection culverts additionally  
installed for 100% inspection  
possibility.

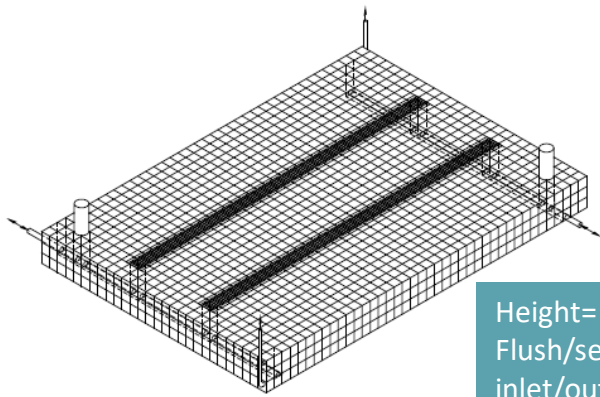
3 off Inspection chambers on top of  
the channels. AIC inspection culverts  
additionally installed for 100%  
inspection possibility





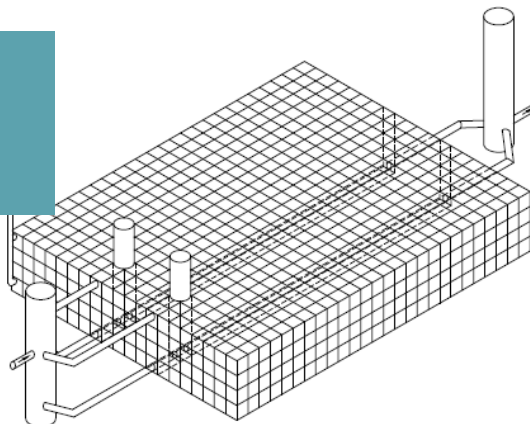
# PiVoid XL

Proposals of smart and effective installations



Height= 1.5 m. (3 layer). 2 off Flush/sedimentation channels for inlet/outlet. Inspection chambers mounted on top. 2 off AIC culverts all along allows max visibility for the inspection

Height= 2 m. (4 layer). 2 off Flush/sedimentation channels all along dia 400 mm. Inspection chambers on top of the channels.





Plastinject Watersystem AB, part of the Lundahl & Hall group, develops and provides smart solutions for stormwater applications.

Our main products are focused on cleaning the water and retain it, i.e we offer Heavy metal separators, Sedimentation systems and Stormwater boxes for nearly all enquiries.

We produce the Stormwater boxes in our factory in south of Sweden.

Turnover for the group is approx. 500 MSEK.

Feel free to contact us – a good deal, we promise!

[www.plastinjectwatersystem.se](http://www.plastinjectwatersystem.se)